

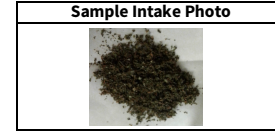


MEDICAL GRADE CBD AND HEMP PRODUCTS DESERVE
MEDICAL GRADE TESTING

LABORATORY CERTIFICATION OF ANALYSIS:

Sample Information	
Client ID:	S49AA-0227
Accession ID:	210060001
Sample ID:	Lifter
Sample Matrix:	Plant Matrial -Flower
Date Received:	01/21/21

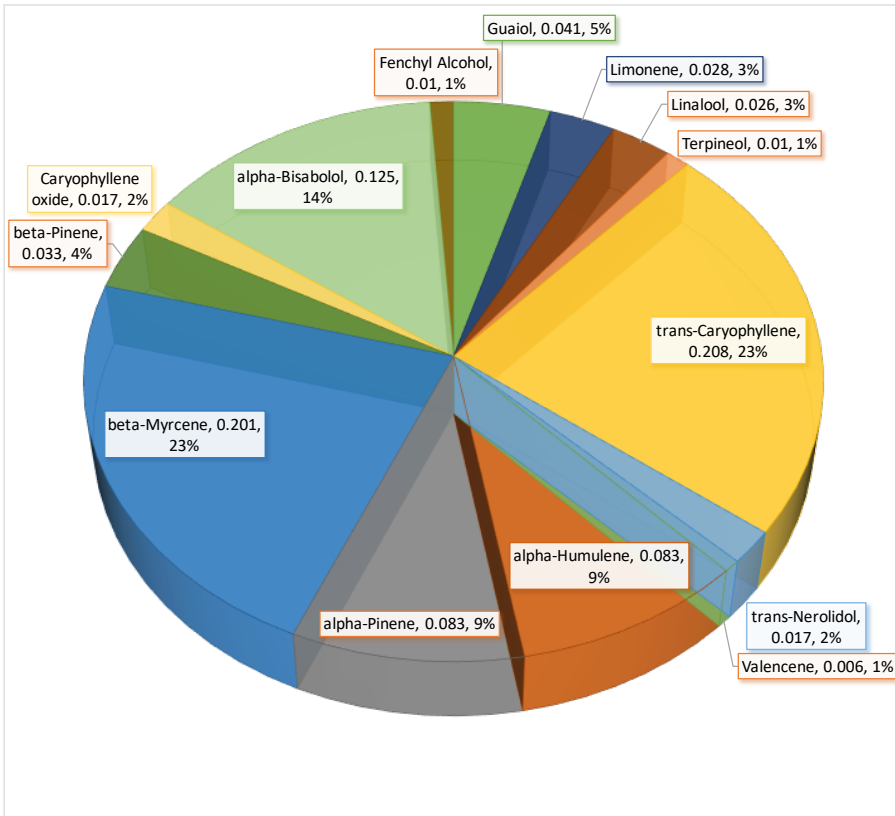
Client Information	
Name / Business	Green Dream Valley, LLC
Address:	W3740 Pieper Rd
City/State/Zip Code:	Watertown, WI 53098
Phone Number:	(920) 763-2212
Email Address:	greenreamvalleyllc@gmail.com



Residual Solvent Contamination Analysis	Test Date(s)
	1/30/21

All material is analyzed via GC/MS by sample weight and compared to certified reference standards at known concentrations.

Terpene	LOD (%)	Amount (%)
alpha-Phellandrene	0.005	Not Detected
Fenchone	0.005	Not Detected
gamma-Terpinene	0.005	Not Detected
Geraniol	0.005	Not Detected
Geranyl acetate	0.005	Not Detected
Guaiol	0.005	0.041
Limonene	0.005	0.028
Linalool	0.005	0.026
Nerol	0.005	Not Detected
Ocimene	0.005	Not Detected
Pulegone	0.005	Not Detected
Sabinene	0.005	Not Detected
Sabinene hydrate	0.005	Not Detected
Terpineol	0.005	0.01
Terpinolene	0.005	Not Detected
trans-Caryophyllene	0.005	0.208
trans-Nerolidol	0.005	0.017
Valencene	0.005	0.006
Cedrol	0.005	Not Detected
alpha-Humulene	0.005	0.083
alpha-Pinene	0.005	0.083
alpha-Terpinene	0.005	Not Detected
beta-Myrcene	0.005	0.201
beta-Pinene	0.005	0.033
Borneol	0.005	Not Detected
Camphene	0.005	Not Detected
Camphor	0.005	Not Detected
Caryophyllene oxide	0.005	0.017
alpha-Cedrene	0.005	Not Detected
alpha-Bisabolol	0.005	0.125
Isopulegol	0.005	Not Detected
cis-Nerolidol	0.005	Not Detected
3-Carene	0.005	Not Detected
Fenchyl Alcohol	0.005	0.01
Hexahydrothymol	0.005	Not Detected
Eucalyptol	0.005	Not Detected
Isoborneol	0.005	Not Detected



Comments:

Notes and disclaimers:
 1) LOD = Limit of Detection. The lowest quantity of a substance that can be distinguished from the absence of that substance.
 2) These results relate only to the test article listed in this report. Reports may not be reproduced except in their entirety.
 3) All results apply to the samples as received. Improper collection of samples can affect the validity of results and is not the responsibility of the lab.
 4) All Measurements are in Parts Per Million (PPM) unless otherwise stated.

Results Verified By: Josh Smith M.S. Signature: Date: 02/02/2021